

Hi, just a reminder that you're receiving this email because you have expressed an interest in PolicyWise for Children & Families. Don't forget to add [acaster@policywise.com](mailto:acaster@policywise.com) to your address book so we'll be sure to land in your inbox!

You may [unsubscribe](#) if you no longer wish to receive our emails.

## Lead ♦ Create ♦ Mobilize



### Our Vision

*Alberta is a leader in creating and mobilizing evidence to ensure the well-being of children, families and communities.*

### Our Mission

*To develop and integrate evidence to inform, identify and promote effective public policy and service delivery to improve the well-being of children, families and communities.*

---

## What's Inside

1. [CYDL launches](#) findings from Experiences of Children & Youth over Time on January 27, 2017
2. [CYDL opens access](#) to Program Overlap Matrix from its longitudinal study
3. [Join the PolicyWise](#) team as our Senior Research Scientist or Project Lead
4. [Research Grants](#) Funding Update
5. [Collaboration](#) among agencies to lead to systematic collection and sharing of data
6. [Apply for a \\$5K Secondary Data](#) Use Funding Grant
7. [Recently funded](#) PolicyWise research
8. [PAX/Triple P Project](#) seeking Research Analyst
9. [Alberta Native Friendship Centres](#) of Alberta seeking Executive Director



---

Findings to be released from Experiences of  
Children & Youth over Time, 2005/06 to 2010/11

January 27, 2017 - 9 am to 3:15 pm

Hear the findings, participate in discussion and be a changemaker.

In collaboration with key Alberta social-sector Ministries, the Child and Youth Data Lab (CYDL) will share the first results from its longitudinal, cross-ministry analysis of over two million Albertans and their use of government services over the span of six years.

A cross-sectoral panel will discuss Fetal Alcohol Spectrum Disorder, the first of many population profiles, and how these results inform policy and service provision.

Interactive concurrent sessions will dive deeper into key findings and stories from the analyses of:

- \* Post-secondary Education
- \* Criminal Offences
- \* Income Support
- \* Family Support for Children with Disabilities.

There's no fee to attend, but [registration](#) is required. This event will be webcast live. For more information, please visit the [registration page](#).

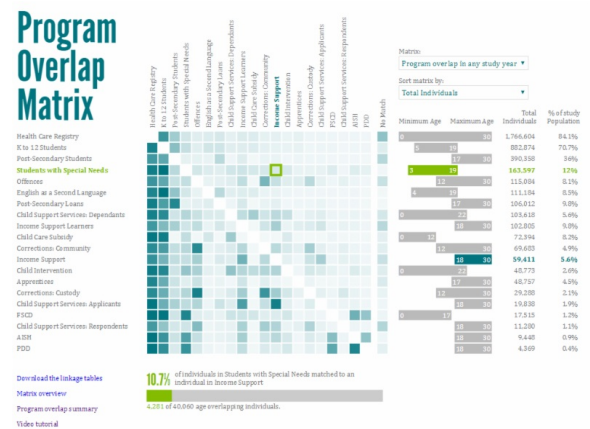
## Access now available to CYDL Longitudinal Study deliverables

The Child and Youth Data Laboratory has released the [Program Overlap Matrix](#) and the [Fetal Alcohol Spectrum Disorder \(FASD\) Population Profile](#), the first of many findings and products to come from the much anticipated longitudinal study, *Experiences of Albertan Children and Youth over Time, 2005-06 to 2010-11*.

The [Matrix](#) is a visualization of program overlap rates and a fabulous way to explore government service use by Albertans.

A [video tutorial](#) on the [Matrix](#) walks new users through use of the tool.

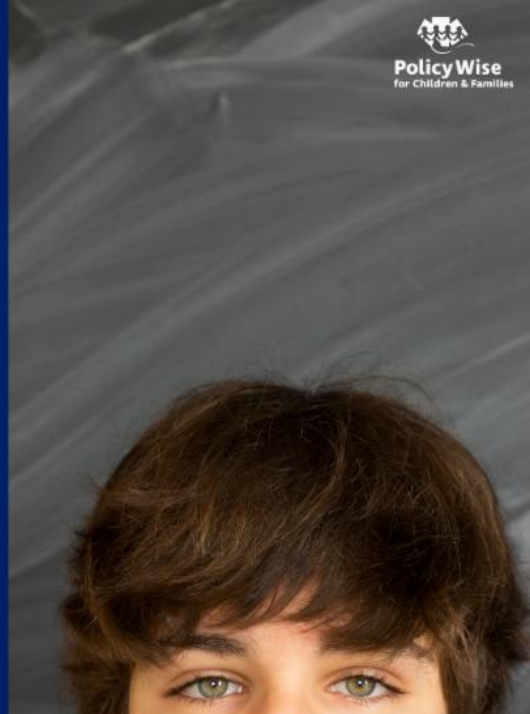
Program Overlap Summaries provide summaries of program overlap rates and details of how those rates were determined and validated.



# Individuals with offences meeting or exceeding educational expectations increased

between 2005 to 2011

from Experiences of Albertan Children & Youth over  
Time by The Child and Youth Data Laboratory



Want to dig deeper? [Register](#) for the launch of the findings from the study, Experiences of Albertan Children & Youth Over Time on January 27.



## PolicyWise seeking a Senior Research Scientist and a Project Lead

PolicyWise for Children & Families (PolicyWise) is recruiting for both a Senior Scientist for its CYDL initiative and a Project Lead for a key project within the Secondary Analysis to Generate Evidence (SAGE) initiative.

Visit our [website](#) for position details and the link to the application forms.



## Research Grants Funding Update

In addition to our recent name change, PolicyWise is currently undergoing a strategic planning process. This reflects our commitment to improving all that we do, including our approach to research grant funding. As a result, we will not be issuing a call for research proposals this January. Please stay tuned for updates to our research grant funding approach by checking our website and signing up for our newsletter.

This update does not affect SAGE funding opportunities. See story below.



**ESL students**  
were just as likely  
to enrol in  
**post-secondary**  
as the general population  
and had  
**less involvement**  
in the **justice** system

*from Experiences of Albertan Children & Youth over Time by The Child and Youth Data Laboratory*

Want to dig deeper? [Register](#) for the launch of the findings from the study, Experiences of Albertan Children & Youth Over Time on January 27.

## Project aims to help agencies collect data that can be later shared



Through a Calgary Foundation grant, PolicyWise and Mount Royal University's Centre for Child Well-Being will work with Calgary-based community agencies to develop common indicators of poverty so that after information is collected, data can be shared and used by all agencies.

This approach will strengthen the charitable sector by enabling and leveraging existing data for common purposes to better address the needs of the community. Other partners include the Calgary Food Bank and Vibrant Communities Calgary.

On January 25,  
let's talk.

WhatsApp Phone Twitter Instagram Facebook Snapchat

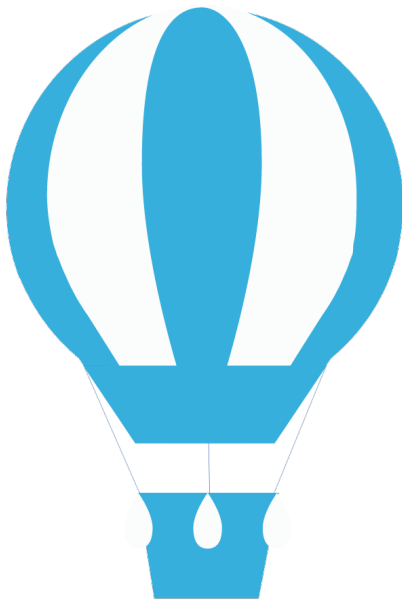
Add your voice

Bell Let's Talk

Mary Walsh

Add your voice to the conversation. Visit [Bell Let's Talk](#) and get





## Funding opportunity available for secondary data use through SAGE initiative

Secondary Analysis for Generating Evidence (SAGE) is a data initiative at PolicyWise for Children & Families. This data and research platform enables the secondary use of data related to child and youth development, health and well-being.

SAGE is requesting proposals for their Secondary Data Use Grant. This grant provides \$5000 to five successful applications to undertake research utilizing research data that is stored and managed by SAGE.

For more information about this grant, please go to our [website](#). Deadline for this grant is February 27, 2017 at 4:00 pm.

If you have any questions about the SAGE Secondary Use Grant, please contact the SAGE team at [data@policywise.com](mailto:data@policywise.com).

**50%**  
of **FSCD**  
clients accessed  
**AISH** services  
at some point between  
**2005 and 2011**

*from Experiences of Albertan Children & Youth over Time by The Child and Youth Data Laboratory*

Policy Wise  
for Children & Families

Want to dig deeper? [Register](#) for the launch of the findings from the study, Experiences of Albertan Children & Youth Over Time on January 27.

## Recently funded PolicyWise Research Projects

**A mixed method study to examine the knowledge, confidence and capacity of service providers to identify and respond to child sexual abuse imagery online (CSAIO)**

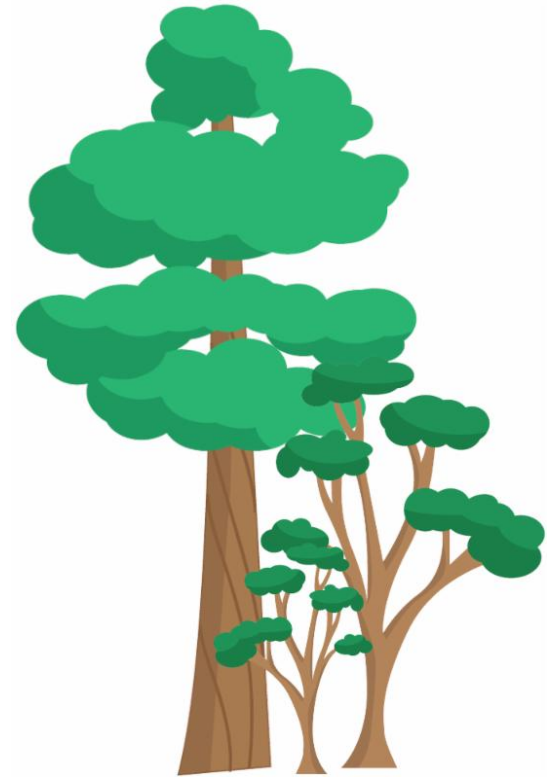
Investigator: Dr. Gina Dimitropoulos, University of Calgary

### Overview:

With technological advances and the explosion of the Internet, the creation and distribution of child sexual abuse images has increased exponentially. Child sexual abuse images online (CSAIO) are nearly impossible to destroy, and

the increasing use of technology by perpetrators has aided in the continuous, lifelong abuse of victims. Front-line service providers are often the first to discover or receive disclosures of CSAIO by children and youth, but are not supplied with adequate information and training for this task. This study looks to explore the current level of knowledge, confidence, and capacity of front-line service providers in recognizing and responding to CSAIO.

[...More details](#)



### **Promoting healthy relationships and masculinities among adolescent boys: Building a community-university partnership to inform policy and practice**

Investigators: Dr. Deiner Exner-Cortens, University of Calgary, Pam Krause, Calgary Sexual Health Centre

#### **Overview:**

The Calgary Sexual Health Centre has spent five years developing and formatively evaluating WiseGuyz, a school-based program for grade nine boys that aims to reduce male-perpetrated violence and improve male sexual health by building healthy relationship skills and healthy masculinities. Evaluation to date supports the design of the program, and its promise for promoting youth well-being. However, to establish the evidence base for WiseGuyz and fill the noted prevention gap, controlled outcome evaluation is needed.

[...More details](#)

### **Improving access to social services for marginalized Albertans with substance use disorders**

Investigator: Dr. Elaine Hyshka, University of Alberta

#### **Overview:**

Each year, Albertans, their families, and communities experience significant health, social, and economic costs related to drug and alcohol misuse, and substance use disorders (SUDs). A disproportionate amount of this burden is borne by Albertans living in poverty, unstable housing, and/or homelessness, who face challenges accessing effective substance use treatment and other supports. Combining treatment with social services like income and housing supports, may be an effective strategy for meeting unmet care needs and improving outcomes. Unfortunately, very little research has examined strategies for connecting vulnerable people with SUDs to integrated treatment and social supports. This is problematic, because many Alberta Human Services policy documents identify a need to integrate substance use treatment with social supports. This program of research is designed to address this gap, by evaluating The Addiction Recovery and Community Health (ARCH) Team, a unique model of care implemented at the Royal Alexandra Hospital (RAH), which provides substance use treatment and social supports to vulnerable patients.

[...More details](#)

### **Developing interventions for children and youth at risk for sexual exploitation: A community-based participatory research project**

Investigator: Dr. Margot Jackson, University of Alberta

#### **Overview:**

Through this work, the team hopes to gain understanding of the experiences of these youth, and collaboratively create programming to protect and/or prevent other children and youth from sexual exploitation. The team aims to gain an understanding of the youths' experiences within broader social, legal, economic, cultural and institutional contexts. We will pay particular attention to how the experiences of children and youth who are at risk for sexual exploitation are embedded within familial, inter-generational, and larger community stories. The team will attend to these experiences from a protective stance; recognizing the strengths that exist within the children and youths' lives rather than solely the challenges that may exist.

[...More details](#)

### Partnering to implement an evidence-based tool within schools to improve child mental health

Investigator: Dr. John McLennan, Children's Hospital of Eastern Ontario, Dr. Julie Owens, Ohio University

#### Overview:

This partnership will strategically approach the uptake, implementation, evaluation, and evaluation-informed modification of an online tool aimed at facilitating the use of an evidence-based intervention (EBI).

[...More details](#)



### PAX/Triple P Project seeking Research Analyst

The PAX/Triple P Project and PEERS Lab in the Department of Psychology at the University of Alberta are seeking a full-time research analyst (RA) to start immediately. The position is for 12 months, with the possibility of renewal pending salary support for an additional year. The RA will join a multidisciplinary collaborative team of investigators who are examining the influence of a school-based intervention designed to improve classroom behaviour. The PAX/Triple P Project is a randomized evaluation of the PAX and Triple P Programs in several elementary schools in Alberta.

[Visit the PEERS Lab for more details on this position.](#)

Support #mentoringmonth

A graphic for Mentoring Month. On the left, a young girl with dark hair is looking upwards and to the right. To her left, the text "#DYK" is written vertically in large, bold, teal letters. On the right, a teal background contains the text "92% OF MENTEEES SAID MENTORING HELPED BUILD THEIR SENSE OF PRIDE" in white, bold, sans-serif font. Below this, the hashtag "#MentoringMonth" is written in white.

This is a month-long promotional campaign in support of mentoring.  
There is a collection of interesting images, videos, promotional content and much more  
for you to share through your social media.

Details at [www.albertamentors.ca/mentoringmonth](http://www.albertamentors.ca/mentoringmonth)

---

## Alberta Native Friendship Centres Association seeking Executive Director

The Alberta Native Friendship Centres Association (ANFCA) is immediately seeking to hire a highly qualified, dedicated, and passionate individual to fill the position of provincial Executive Director. The ideal candidate will have an in-depth knowledge and understanding of urban Indigenous issues, as well as extensive community leadership experience at the local, regional and national levels.

For details on this position, please visit the association's website.

---

Lead ♦ Create ♦ Mobilize



**Policy Wise**  
for Children & Families

STAY CONNECTED:



View our profile on [LinkedIn](#)