



Policy Wise
for Children & Families

Child and Youth Data Lab Overview

Presented by:

Xinjie Cui B.Med, MBA PhD

Chief Analytics Officer

January 27, 2017



Child and Youth Data Lab

Data sharing authority

- Children First Act (CFA)
- Health Information Act (HIA)
- Freedom of Information and Protection of Privacy Act (FOIP)





Data Sharing Process

- Ethics review
- Privacy impact assessment
- Data sharing agreements
- Confidentiality agreement
- Policies, procedures, and training
- Physical security – ISO certified

Balancing Privacy and Utility

Public Good

- Data and Information
- Privacy

Risk of Doing and Risk of Not Doing

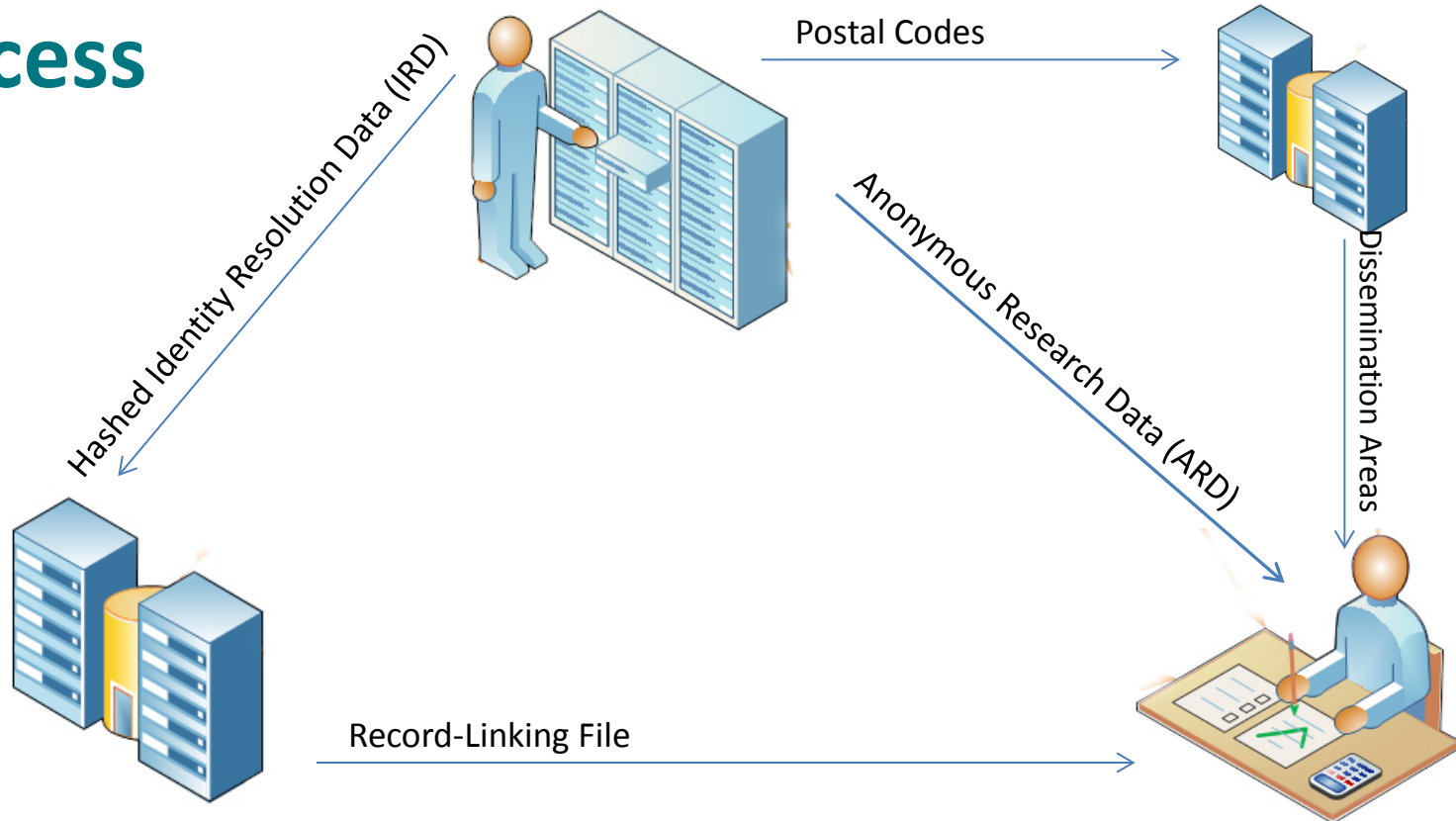
- Sharing , Linking, Reporting
- Protecting Information Privacy



CYDL Data Linkage Process

MINISTRIES
Extract and submit IRD,
postal codes and ARD

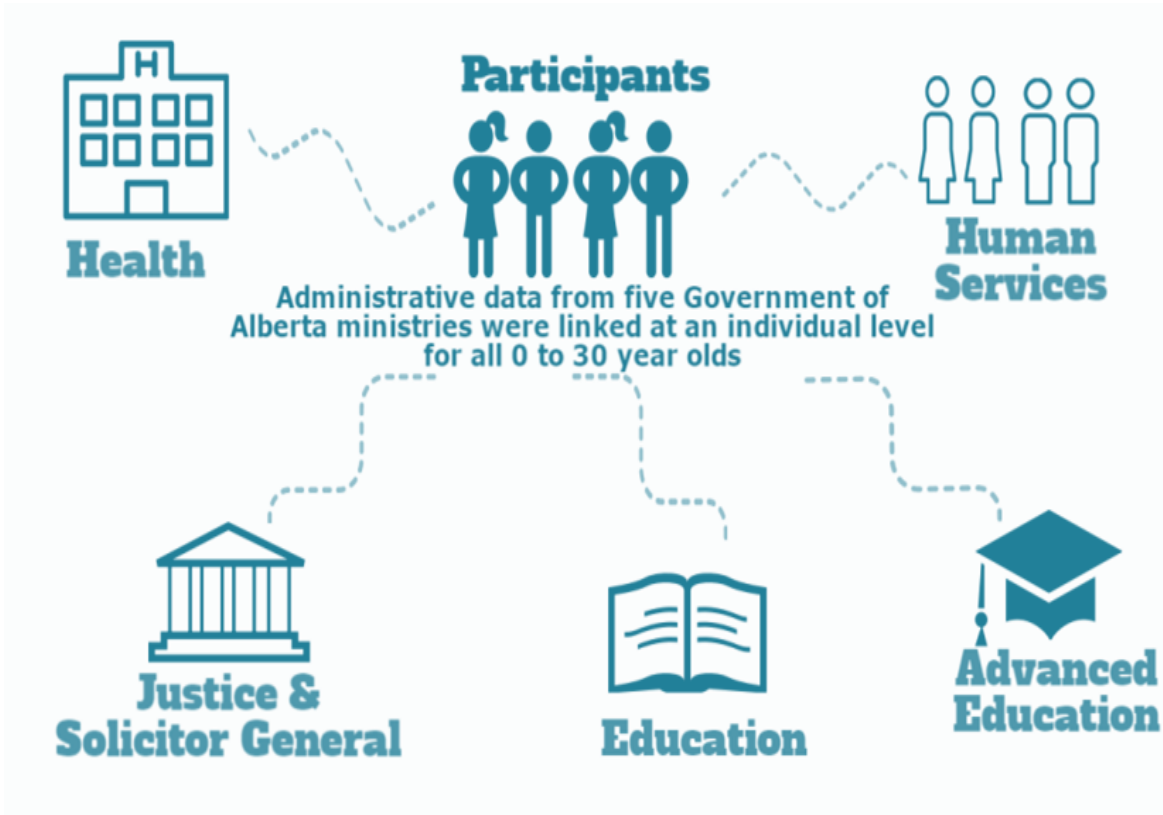
HUB
Translate postal codes to
dissemination areas



AIRS
Match IRD records and
generate record-linking file

CYDL
Link ARD and analyze

Children and Youth Experience Longitudinal Project



- **2 million+** Albertans 0 to 30 years of age
- **50 million+** service uses over 6 years (2005/06 to 2010/11)
- **20+** databases; more than **225** data elements



Longitudinal Project Analysis

Time Trends

- Populations and Characteristics
- Policy changes and effects ...

Cross–Ministry Service Use Patterns

Trajectories/Pathways and Influencing Factors

- Youth transition
- Resilience
- Early childhood development
- Mental health ...

Focused Topics

- FASD
- Disabilities
- Persistent offenders ...



Publically Released Deliverables

Program Overlap Matrix

Program and population profile and dashboard

- Fetal Alcohol Spectrum Disorder
- Post-secondary Education
- Criminal Offenses
- Income Support
- Family Support for Children with Disability





Next Set of Deliverables

Program and population profiles and dashboard

- Young Albertans (overview of all population)
- Mental Health Service Use
- Children Receiving Child Care Subsidy
- Youth and Young Adult in Corrections
- Child Support Services





More Deliverables

Program and population profiles and dashboard

- Post-secondary Student and Mental Wellness
- Income Support Learners
- Child Support Service
- Assured Income for the Severely Handicapped
- Persons with Developmental Disorders...

Topic specific and in depth analysis

- Youth Transition
- Resiliency
- Early Childhood Experiences
- Injuries and Intentional Harm
- Trajectory of Offence: Risk and Resilience
- Emergency Room Use and Primary Care Services...



Knowledge Mobilization

- CYDL KM Working Group
- CYDL KM Plan
- Longitudinal Project Symposium
- Lunch and Learns...
- Communications in Ministries and with their stakeholders

Optimizing CYDL Model

Sustainable funding and designated resources

- Predictable and flexible
- Dedicated staff within partnering ministries

Strong governance and engagement

- Accountability structures and processes
- Sponsors and champions at multiple levels
- Strong project management and coordination

Enabling data sharing legislation

- Balancing benefit and risk

Return on Investment

- More relevant information is generated
- More information is used to inform decision making
- Refresh of data (more recent data can be added)



Policy Wise
for Children & Families

Thank you!

data@policywise.com