



Policy Wise
for Children & Families

CYDL Longitudinal Project: Justice and Solicitor General

Presented by:

Christine Werk, Michael Stansberry, and Dawn Chalas

January 27, 2017

Justice and Solicitor General

- Justice: courts
- Solicitor General: police and correction services

Process

- Police contact, offence(s), extrajudicial sanctions, remand, trial, sentencing (custody and/or community), probation



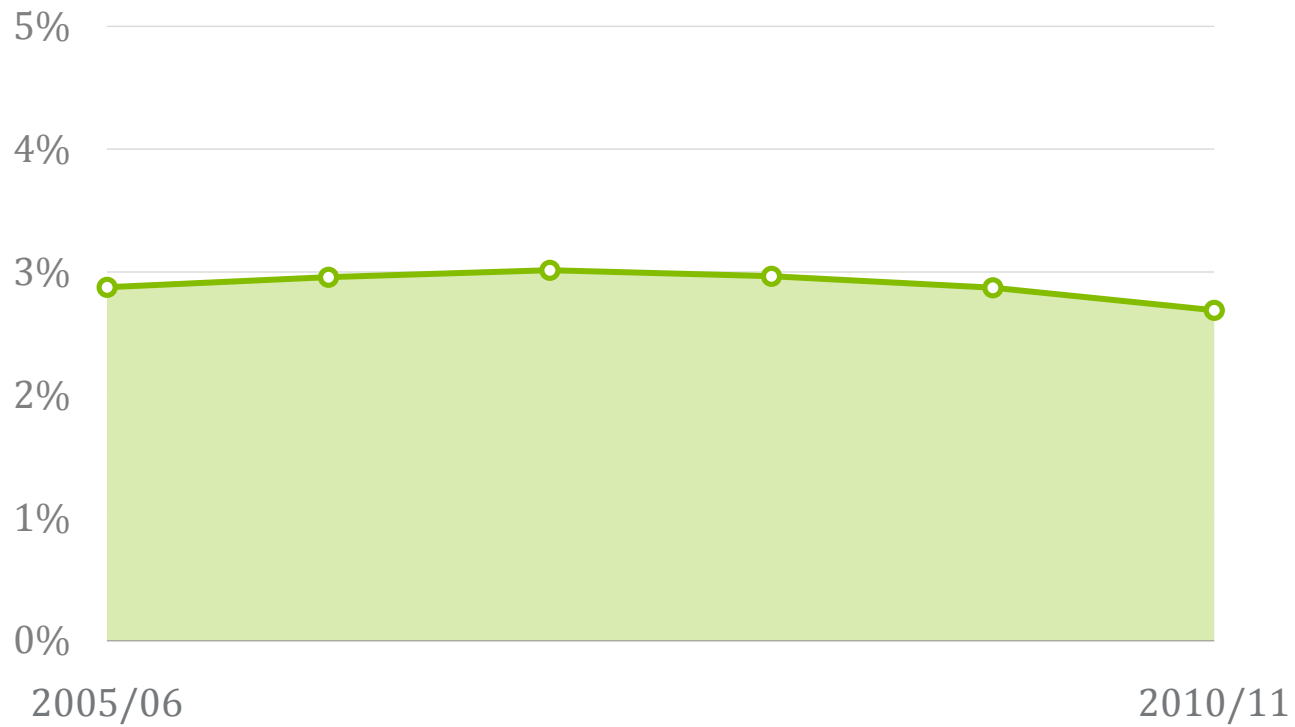
Sample Concepts

- Criminal offences
- Number of offences
- Offence type (Property, drug, violent, administrative, other criminal)
- Corrections involvement (youth/adult)
- Court outcome (Extrajudicial sanctions, not sentenced, custody, non-supervised, supervised)



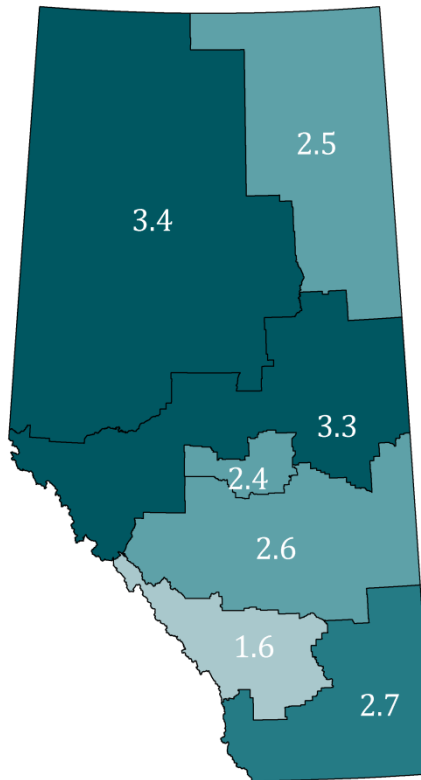
Criminal offences

Percentage of Albertans aged 12 to 25 with criminal offences over time



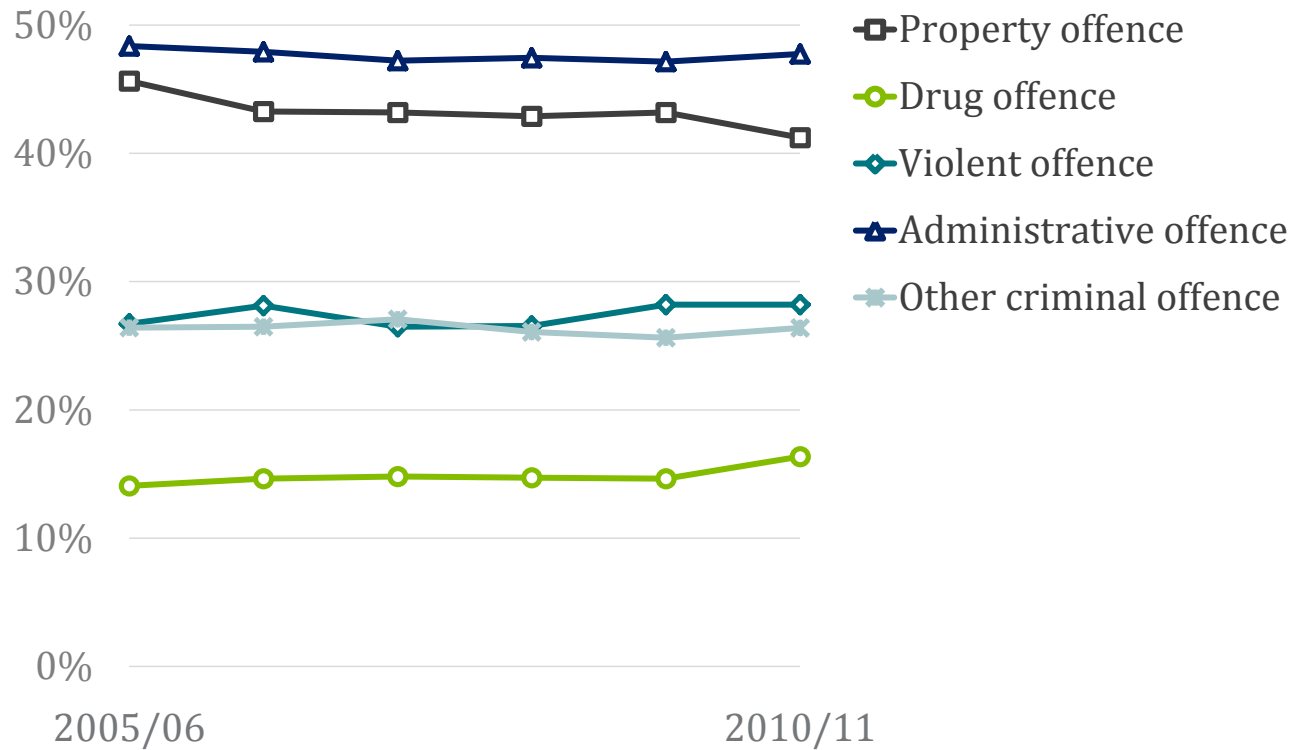
Region of residence

Percentage of Albertans aged 12 to 25 with criminal offences in 2010/11, by Human Services region



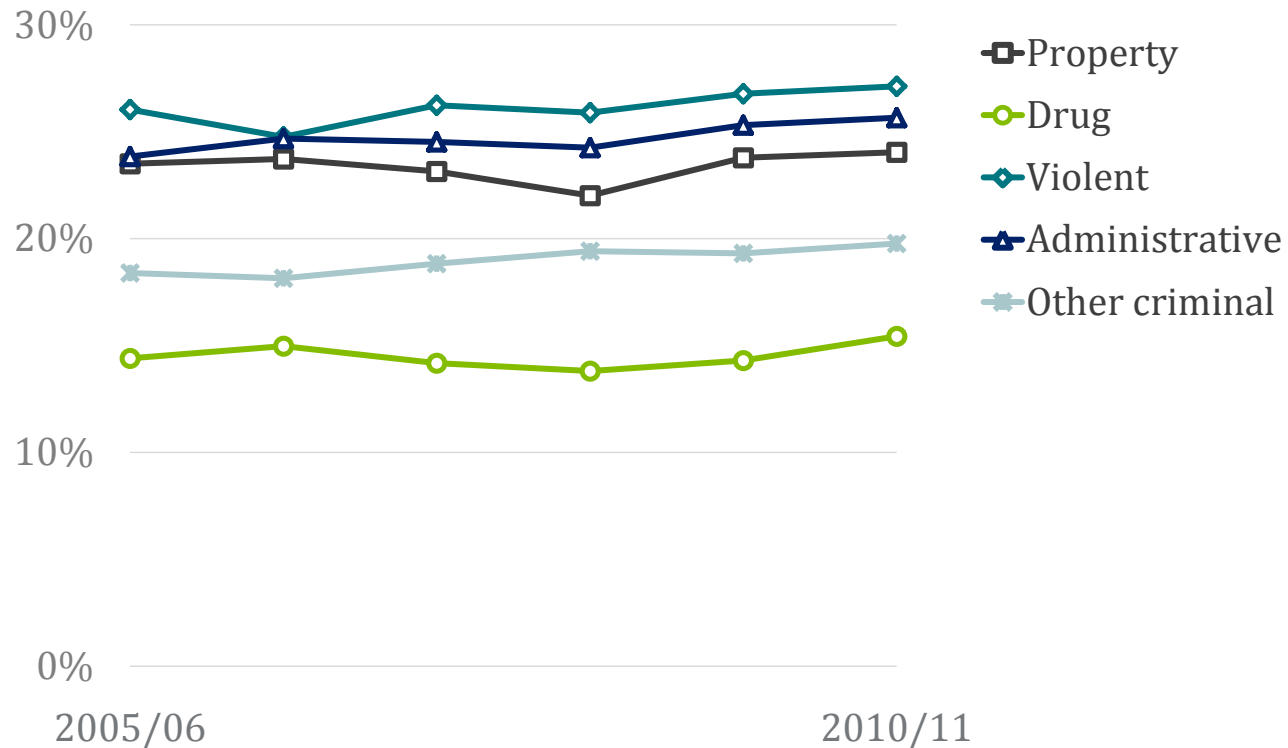
Offence type

Percentage of Albertans aged 12 to 25 with at least one criminal offence, by offence type over time



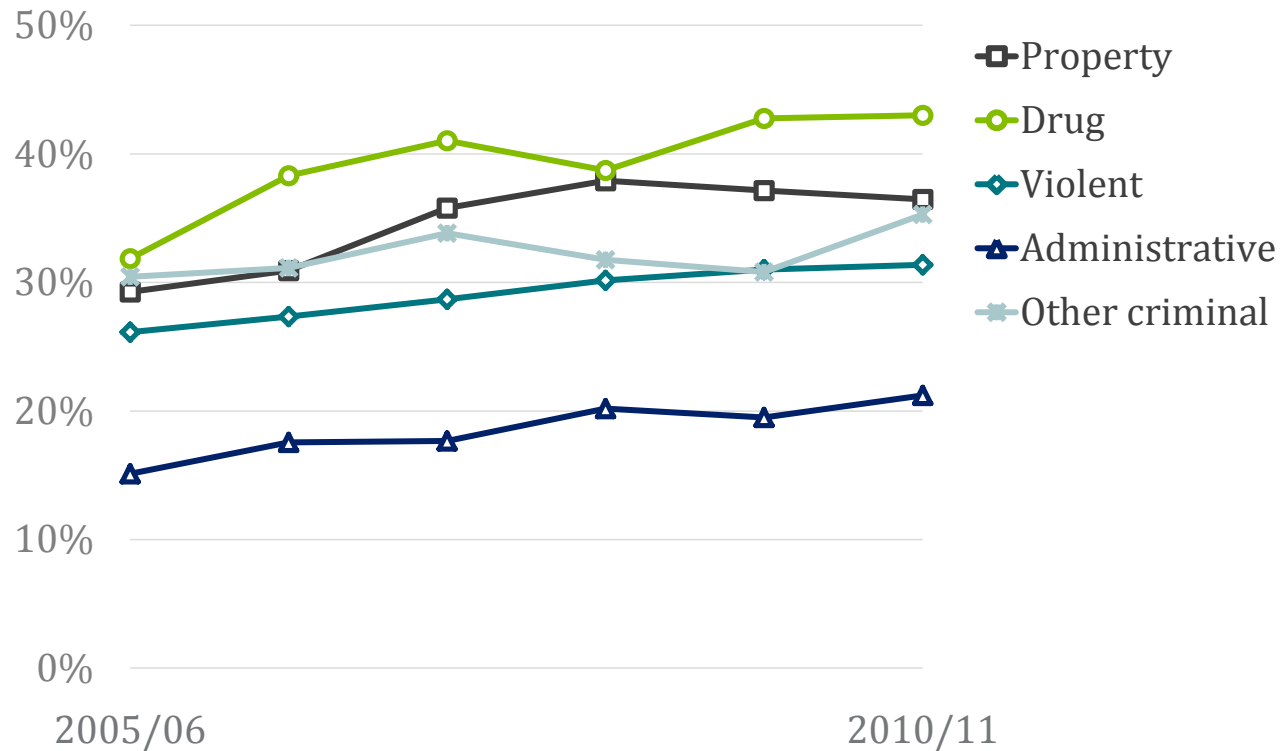
Mental health service

Percentage of Albertans aged 12 to 25 with at least one criminal offence who used a mental health service, by offence type over time



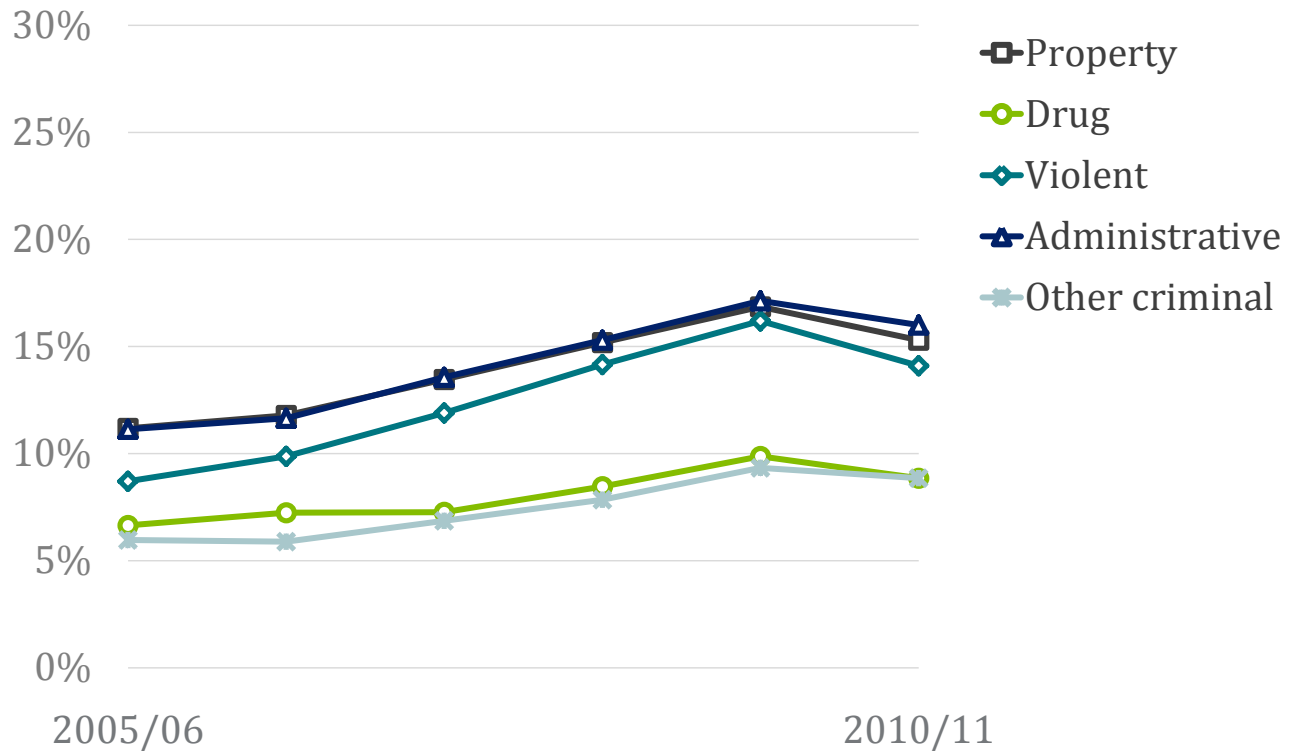
Educational achievement

Percentage of Albertans aged in grades 3 to 12 with at least one criminal offence who were meeting or above educational expectations, by offence type over time



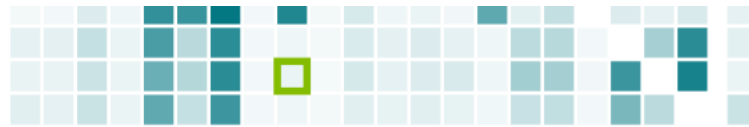
Income Support

Percentage of Albertans aged 18 to 25 with at least one criminal offence who received Income Support, by offence type over time



Corrections Involvement and AISH

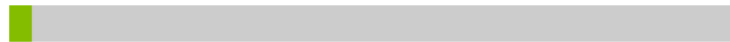
- RDD
- Corrections: Community
- Corrections: Custody**
- Offence Charges



	18	30	4,569	0.4%
12		30	69,683	4.9%
12		30	29,288	2.1%
12		30	115,084	8.1%

- [Download the linkage tables](#)
- [Matrix overview](#)
- [Program overlap summary](#)

3.1% of individuals in Corrections: Custody matched to an individual in AISH



855 of 27,934 age overlapping individuals.

AISH : Assured Income for Severely Handicapped

Summary of Findings:

Individuals Charged with an Offence

- The proportion of youth and young adults with criminal offences who were female increased over time (21 to 24%).
- The proportion of individuals with criminal offences who were meeting or exceeding educational expectations increased over the study period (31 to 38%).
- Youth with administrative offences were the least likely to be meeting or above educational expectations, compared to youth with other offence types.
- Compared to other offence types, individuals with drug-related offences tended to be older, lived in better socio-economic areas, and moved between residences less.
- 29.6% of individuals receiving Income Support, and 19.6% of Income Support Learners had offences, compared to 7.2% to 9.3% in the general population.



Summary of Findings:

Individuals Charged with an Offence cont...

- A lower proportion of individuals with drug-related offences were high cost health users, performed below educational expectations, or received services for a mental health condition, Child Intervention, or Income Support compared to individuals with other offence types.
- Child Support Services dependents, applicants, and respondents have high rates of involvement in the justice system. The offence rates for dependents, applicants, and respondents were 15.7%, 25.1%, and 43.2%, respectively.
- English as a Second Language students' involvement in the justice system was lower than the general Alberta population (e.g., 3.4% had an offence during the study period, compared with 6.8% in the population of the same age).



Summary of Findings:

Individuals with Corrections Involvement

- Youth and young adults in community corrections had high rates of overlap with Income Support (21.5%), and Income Support Learners (23.0%) during the study period. Percentages for the population were 5.3% and 8.6%, respectively.
- Youth and young adults in community corrections had similar overlap with registration in K to 12 education (65.9%) as all those of the appropriate age in the Health Care registry (66.8%) but post-secondary enrolment was relatively low (17.9%, compared to 31.6% in the health care registry).
- Individuals with community corrections involvement made up 30.3% of Child Support Services respondents, 21.8% of Income Support recipients, 17.6% of Child Support Services applicants, 13.6% of Child Support Services Dependents, 13.5% of Income Support Learners, and 14.2% of Assured Income for the Severely Handicapped clients during the study period.



Summary of Findings:

Individuals with Corrections Involvement cont...

- Almost a third of youth and young adults involved in custodial corrections were using Income Support services (31.9%), compared with 5.3% in the general population of the same age. One in four individuals custodial corrections were students with special needs during the study period (24.8%), 53.6% were enrolled in K to 12 education and 15.8% were enrolled in post-secondary during the study period; the respective percentages for the population were 11.7%, 66.8%, and 31.6%, respectively.
- Justice and Solicitor General expected a higher rate of linkage between custodial corrections and Assured Income for the Severely Handicapped (3.1%), because they are aware that many corrections clients have disability needs that would qualify them for the program.



Upcoming Reports

- Youth corrections profile
- Adult corrections profile
- Violent offenders
- Criminal pathways
- High volume offenders



Guiding Questions

- Which findings might be relevant to your ministry/branch policy or program priorities?
- What other analysis should the CYDL pursue with this data?/What future research directions could we take?





Policy Wise

for Children & Families

mobilizing evidence to inform policy

cwerk@policywise.com

<https://visualization.policywise.com/P2dashboard>