

GEOGRAPHY & CONFIDENTIALITY

Resources



CENSUS GUIDES & CONFIDENTIALITY

GUIDE TO THE CENSUS OF POPULATION, 2021

Provides an overview of the Census of Population content determination, collection, processing, data quality assessment and data dissemination

CENSUS DICTIONARY

Great general reference in alphabetic order to consult on the main issues regarding the census

CONFIDENTIALITY CENSUS OF POPULATION, 2021

Overview of how Statistics Canada balances the protection of confidentiality and the needs for disaggregated census data.



CENSUS PROFILE, 2021 CENSUS OF POPULATION

This profile presents information from the 2021 Census of Population for various levels of geography, including provinces and territories, census metropolitan areas, communities, census tracts and dissemination areas. Using the search or browse option users can search for an area of interest by typing its place name, postal codeOM or geographic code or by browsing a list. **Used during the presentation.**

POPULATION AND DWELLING COUNT HIGHLIGHT TABLES

Provide population and dwelling counts established from the 2021 Census of Canada



GEOGRAPHY CONCEPTS & DEFINITIONS

CENSUS LEARNING CENTRE, GEOGRAPHY VIDEOS

A collection of videos that cover the basic issues with geographies

HIERARCHY OF STANDARD GEOGRAPHIC AREAS FOR DISSEMINATION, 2021 CENSUS

Great reference that contains all the relationships among the different levels of geographies. **Used during presentation**

DISSEMINATION GEOGRAPHY UNIQUE IDENTIFIER: DEFINITION AND STRUCTURE

Describes the structure of the Dissemination Geography Unique Identifier (DGUID) code

ILLUSTRATED GLOSSARY (GEOGRAPHY)

Also available in PDF version for download

GEOSUITE

Search-engine like page that links the most basic census information for different geographies. **Used during presentation**



REFERENCE MAPS

STANDARD GEOGRAPHICAL CLASSIFICATION (SGC) REFERENCE MAPS, 2021

A systematic classification structure that categorizes all of the geographic areas of Canada. General view and ubication of big geographic areas.

FEDERAL ELECTORAL DISTRICT REFERENCE MAP (PDF), 2021

A shared resource with Elections Canada that covers the electoral districts at the federal level.

CENSUS TRACT REFERENCE MAPS, BY CENSUS METROPOLITAN AREAS OR CENSUS AGGLOMERATIONS, 2021

Used during the presentation with the example of all Census Tracts for the Census Metropolitan Area of Edmonton.

GEOGRAPHIC ATTRIBUTE FILE, 2021

Contains geographic data at the dissemination block level. The file includes geographic codes, land area, population and dwelling counts, names, unique identifiers, DGUIDs and types, where applicable.

CORRESPONDENCE FILES, 2021

Contain unique identifiers for the current census geographic area and the corresponding unique identifier for the previous census geographic area

POSTAL CODE CONVERSION FILE (PCCF), REFERENCE GUIDE

Provides an overview of the file, the general methodology used in its creation and important technical information. If you wish to access Postal Code Conversion File (PCCF), the Social Policy Simulation Database and Model (SPSD/M) or the Discharge Abstract Database (DAD), please see:

[APPLICATION PROCESS \(STATCAN.GC.CA\)](https://www150.statcan.gc.ca/n1/pub/92-626-x/2016001/article/00001-eng.htm)



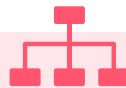
FURTHER LEARNING

STATISTICS CANADA LEARNING CATALOGUE

The data literacy learning catalogue is organized by the step on the data journey and can be sorted by title, data competency, level, and type.

QGIS TRAINING VIDEOS

For more advanced geography training, follow along with these tutorials and learn the key concepts and procedures for performing common GIS tasks – such as creating maps, joining and overlaying datasets, and examining spatial variations.



BASIC CODES FOR ALBERTA GEOGRAPHIES

PROVINCE

48 Alberta

ECONOMIC REGIONS (ER)

4810 Lethbridge–Medicine Hat
 4820 Camrose–Drumheller
 4830 Calgary
 4840 Banff–Jasper–Rocky Mountains House
 4850 Red Deer
 4860 Edmonton
 4870 Athabasca–Grand Prairie–Peace River
 4880 Wood Buffalo–Cold Lake

CENSUS DIVISIONS (CD)

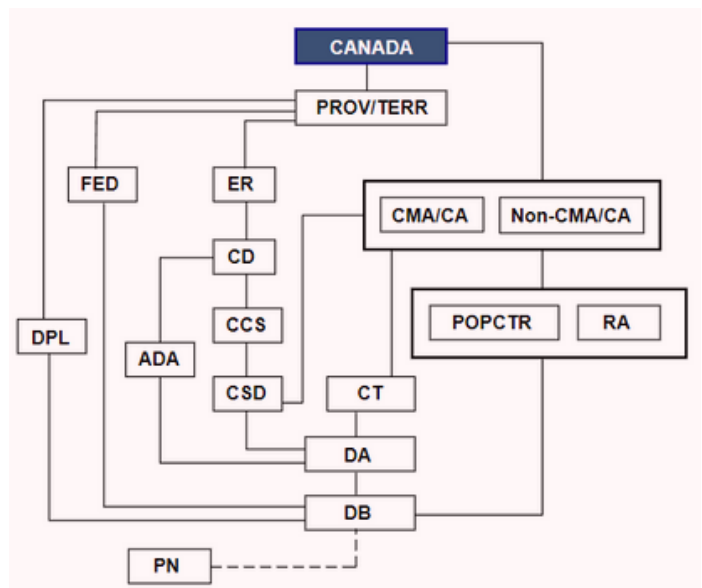
01–19 48nn (4801, 4802, ..., 4819)

CENSUS SUBDIVISIONS (CSD)

48nnxxx (three-digit code nested within each CD code)

CENSUS METROPOLITAN AREAS (CMA) & CENSUS AGGLOMERATIONS (CA)

48805 Medicine Hat	48831 Sylvan Lake
48806 Brooks	48832 Lacombe
48810 Lethbridge	48833 Camrose
48820 Okotoks	48835 Edmonton
48821 High River	48840 Lloydminster
48825 Calgary	48850 Grande Prairie
48826 Strathmore	48860 Wood Buffalo
48828 Canmore	48865 Wetaskiwin
48830 Red Deer	



NEIGHBOURHOODS

Denominations such as Jasper Place, Strathcona, Clear View, etc. (Edmonton) do not exist as standard geographies. Instead, use:

- Census Tracts (CT)*
- Dissemination Areas (DA)*
- Dissemination Blocks (DB)**

*Available in Census Profiles & GeoSuite

** Available in GeoSuite only



Toll-free:
1-800-263-1136



Email:
infostats@statcan.gc.ca



Website:
<https://www.statcan.gc.ca>