

POLICYWISE FOR CHILDREN & FAMILIES

Evaluation

An Evaluation Framework has been designed to evaluate Youth Mental Health Hubs in Alberta under the implementation and operational approach. Each community is unique and therefore, it is understood that communities will be at different phases of implementing their integrated service delivery hub. Therefore, the Evaluation Framework reflects the phases of implementation, with short-, intermediate-, and long-term outcomes that outline realistic expectations as integrated service delivery hubs evolve through the continuum of integrative practice.

To access the full report please email PolicyWise at info@policywise.com

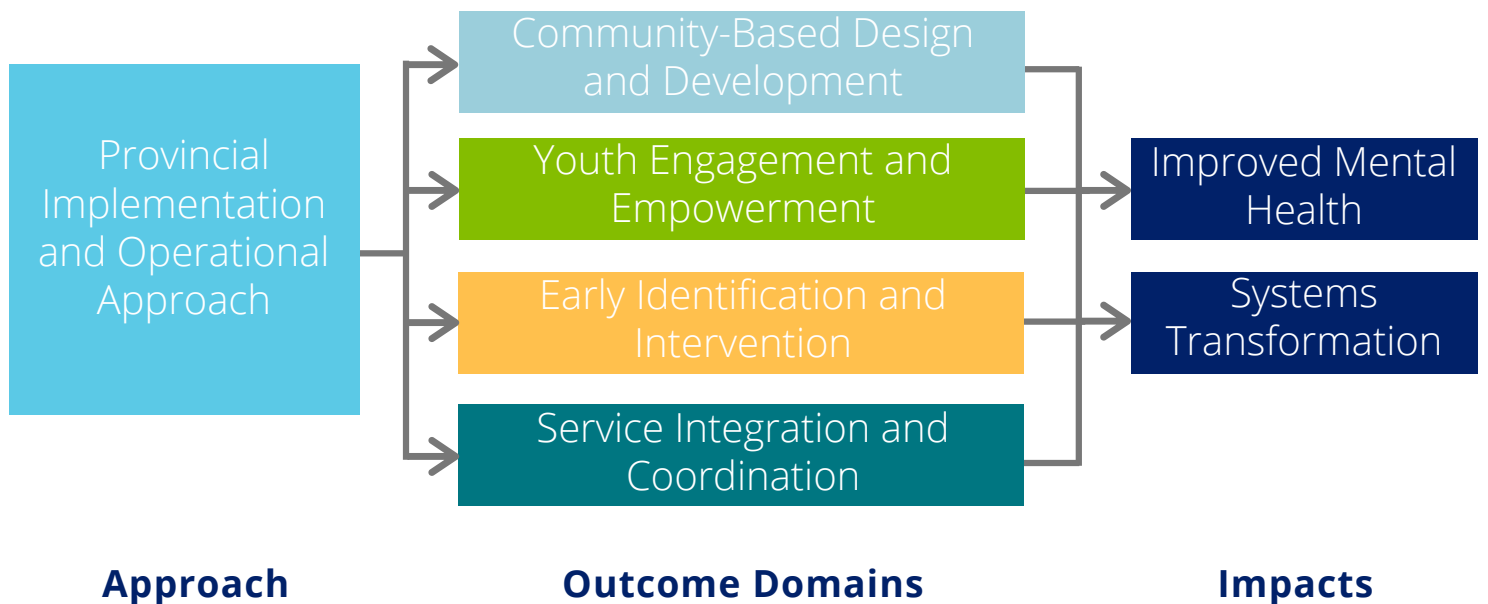


PolicyWise
for Children & Families

EVALUATION

Theory of Change

The Evaluation Framework outlines the theory of change for Youth Mental Health Hubs, as depicted in this image below:



Evaluating aspects of integrated service delivery occurs throughout the design and development, implementation, and operational stages, where each stage provides iterative, developmental feedback to the provincial implementation and operational approach.